



Application

Truck Scale, Railway Scale, Hopper Scale, Special Scales

适用于汽车衡、轨道衡、料斗秤及各种专用衡器

Parameter

Material 材料: Alloy 合金钢, Stainless 合金钢

Capacity 量程: 1Klb-50Klb

Rated Output 额定输出: 3mV/V

Non Linearity 非线性: $\pm 0.03\%F.S.$

Hysteresis 滞后: $\pm 0.03\%F.S.$

Repeatability 重复性: $\pm 0.02\%F.S.$

Creep (30min) 蠕变: $\pm 0.03\%F.S.$

Zero Balance 零点输出: $\pm 1.00\%F.S.$

Tem.Effect on Zero 零点温度系数: $\pm 0.03\%F.S./10^{\circ}C$

Tem.Effect on Output 额定输出温度系数: $\pm 0.03\%F.S./10^{\circ}C$

Input Impedance 输入电阻: $700 \pm 5\Omega$

Out Impedance 输出电阻: $700 \pm 5\Omega$

Insulation Impedance 绝缘电阻: $\geq 5000M\Omega$

Excitation Voltage 供桥电压: 10V (DC/AC)

Compensated Tem.Range 补偿温度范围: $-10^{\circ}C \sim +50^{\circ}C$

Service Tem.Range 使用温度范围: $-20^{\circ}C \sim +60^{\circ}C$

Safe Overload Range 安全过载: $120\%F.S.$

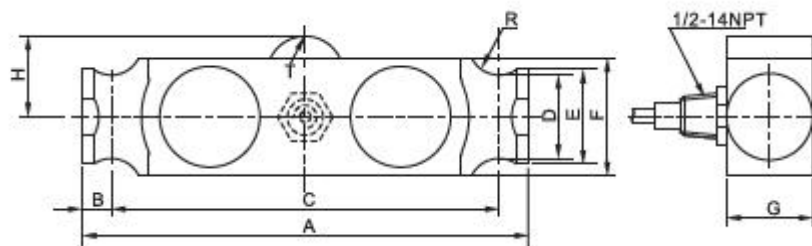
Protection Class 防护等级: IP67

Cable length 电缆长度: 10m

Wire Code 接线方式: Red 红 (Ex+) Black 黑 (Ex-)

Green 绿 (Sig+) White 白 (Sig-)

Outline Dimensions



Capacity	Size (mm)										N.W.	
	A	B	C	D	E	F	G	H	R	T		
Klb												kg
20-40	210.0	12.7	184.2	41.4	50.8	62.0	49.3	44.5	12.7	12.7		4.0
50-75	292.0	19.1	254.0	43.2	55.8	74.7	49.3	50.8	19.1	25.4		7.0
100-125	368.0	25.4	317.2	62.0	81.3	98.0	73.7	69.9	25.4	38.1		16.0

