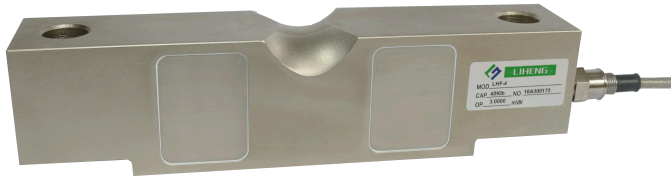


Application



Truck Scale, Railway Scale, Hopper Scale, Special Scales

适用于汽车衡、轨道衡、料斗秤及各种专用衡器

Parameter

Material 材料: Alloy 合金钢, Stainless 不锈钢

Capacity 量程: 1Klb-50Klb

Rated Output 额定输出: 3mV/V

Non Linearity 非线性: $\pm 0.03\%F.S.$

Hysteresis 滞后: $\pm 0.03\%F.S.$

Repeatability 重复性: $\pm 0.02\%F.S.$

Creep (30min) 蠕变: $\pm 0.03\%F.S.$

Zero Balance 零点输出: $\pm 1.00\%F.S.$

Tem.Effect on Zero 零点温度系数: $\pm 0.03\%F.S./10^{\circ}C$

Tem.Effect on Output 额定输出温度系数: $\pm 0.03\%F.S./10^{\circ}C$

Input Impedance 输入电阻: $700 \pm 5\Omega$

Out Impedance 输出电阻: $700 \pm 5\Omega$

Insulation Impedance 绝缘电阻: $\geq 5000M\Omega$

Excitation Voltage 供桥电压: 10V (DC/AC)

Compensated Tem.Range 补偿温度范围: $-10^{\circ}C \sim +50^{\circ}C$

Service Tem.Range 使用温度范围: $-20^{\circ}C \sim +60^{\circ}C$

Safe Overload Range 安全过载: 120%F.S.

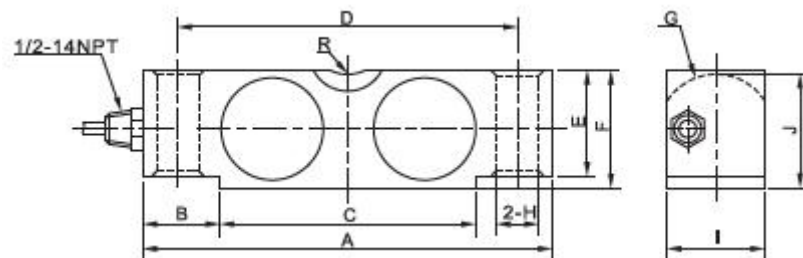
Protection Class 防护等级: IP67

Cable length 电缆长度: 10m

Wire Code 接线方式: Red 红 (Ex+) Black 黑 (Ex-)

Green 绿 (Sig+) White 白 (Sig-)

Outline Dimensions



Capacity	Size (mm)											N.W. kg
	A	B	C	D	E	F	G	H	I	J	R	
Klb												
10-25	197.0	35.0	127.0	165.0	43.2	19.3	22.9	18.0	43.4	47.5	19.0	3.0
40-50Se	260.4	49.0	162.4	216.0	53.8	62.0	28.5	20.6	50.0	59.4	25.4	7.0
50-75	260.4	49.0	162.3	216.0	67.0	74.7	34.8	26.9	61.7	72.1	25.4	8.0
100-125	387.0	80.0	227.0	324.0	87.0	98.0	45.7	41.5	73.9	94.7	38.1	18.0
200	489.0	101.6	285.8	387.0	130.0	147.3	45.7	41.5	96.5	130.1	50.8	25.0

