

Application

Crane Scale

适用于吊钩秤

Accessories: Hook, Ring

配件: 吊钩、吊环



Parameter

Material 材料: Alloy 合金钢

Capacity 量程: 1t-100t

Rated Output 额定输出: 1.5mV/V

Non Linearity 非线性: $\pm 0.02\%F.S.$ Hysteresis 滞后: $\pm 0.02\%F.S.$ Repeatability 重复性: $\pm 0.01\%F.S.$ Creep (30min) 蠕变: $\pm 0.02\%F.S.$ Zero Balance 零点输出: $\pm 1.00\%F.S.$ Tem.Effect on Zero 零点温度系数: $\pm 0.02\%F.S./10^{\circ}C$ Tem.Effect on Output 额定输出温度系数: $\pm 0.02\%F.S./10^{\circ}C$ Input Impedance 输入电阻: $385 \pm 10\Omega$ Out Impedance 输出电阻: $350 \pm 3\Omega$ Insulation Impedance 绝缘电阻: $\geq 5000M\Omega$

Excitation Voltage 供桥电压: 10V (DC/AC)

Compensated Tem.Range 补偿温度范围: $-10^{\circ}C \sim +50^{\circ}C$ Service Tem.Range 使用温度范围: $-20^{\circ}C \sim +60^{\circ}C$ Safe Overload Range 安全过载: $120\%F.S.$

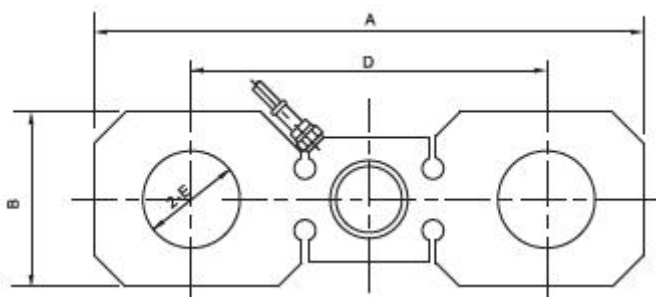
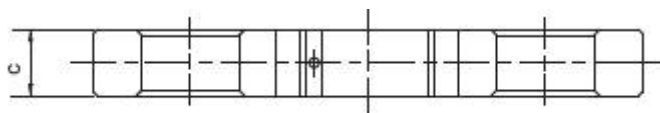
Protection Class 防护等级: IP67

Cable length 电缆长度: 1m

Wire Code 接线方式: Red 红 (Ex+) Black 黑 (Ex-)

Green 绿 (Sig+) White 白 (Sig-)

Outline Dimensions



Capacity	Size (mm)					N.W.
t	A	B	C	D	E	kg
1-3	200.0	60.0	22.0	134.0	32.0	1.5
4	218.0	68.0	26.0	138.0	36.0	2.5
5-6	227.0	70.0	28.0	147.0	40.0	2.8
8-10	283.0	90.0	34.0	183.0	50.0	5.5
15	323.0	110.0	38.0	205.0	65.0	8.0
20	318.0	110.0	42.0	200.0	60.0	8.5
25-30	350.0	126.0	50.0	216.0	60.0	12.0
50	500.0	180.0	60.0	320.0	72.0	33.0
100	570.0	170.0	90.0	370.0	100.0	50.0

