



Application

Crane Scale

适用于吊钩秤

Accessories: Hook, Ring

配件: 吊钩、吊环

Parameter

Material 材料: Alloy 合金钢

Capacity 量程: 5t-30t

Rated Output 额定输出: 2mV/V

Non Linearity 非线性: $\pm 0.03\%F.S.$

Hysteresis 滞后: $\pm 0.03\%F.S.$

Repeatability 重复性: $\pm 0.01\%F.S.$

Creep (30min) 蠕变: $\pm 0.02\%F.S.$

Zero Balance 零点输出: $\pm 1.00\%F.S.$

Tem.Effect on Zero 零点温度系数: $\pm 0.02\%F.S./10^{\circ}C$

Tem.Effect on Output 额定输出温度系数: $\pm 0.02\%F.S./10^{\circ}C$

Input Impedance 输入电阻: $765 \pm 10\Omega$

Out Impedance 输出电阻: $700 \pm 3\Omega$

Insulation Impedance 绝缘电阻: $\geq 5000M\Omega$

Excitation Voltage 供桥电压: 10V (DC/AC)

Compensated Tem.Range 补偿温度范围: $-10^{\circ}C \sim +50^{\circ}C$

Service Tem.Range 使用温度范围: $-20^{\circ}C \sim +60^{\circ}C$

Safe Overload Range 安全过载: $120\%F.S.$

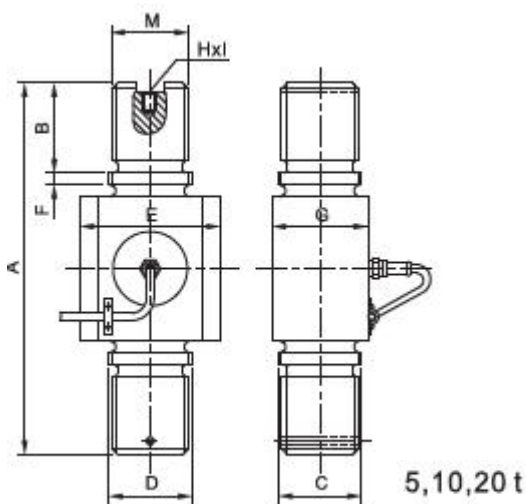
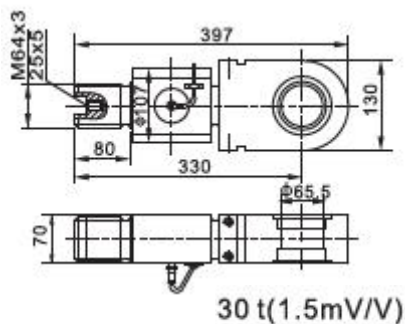
Protection Class 防护等级: IP67

Cable length 电缆长度: 0.5m

Wire Code 接线方式: Red 红 (Ex+) Black 黑 (Ex-)

Green 绿 (Sig+) White 白 (Sig-)

Outline Dimensions



Capacity	Size (mm)									N.W. kg
	t	A	B	C	D	E	F	G	H*1	
5	206.0	48.5	45.0	55.0	65.0	8.0	134.0	-	M36*3	3.0
10	206.0	49.0	55.0	55.0	76.0	8.0	138.0	12*8	M42*3	5.0
20	250.0	60.0	56.0	56.0	93.0	8.0	147.0	20*6	M52*3	8.5

